

Peninsula View

Retirement Living



Baptcare ✦

30-32 Moorooduc Highway, Frankston South

*It's time...
for you.*





Peninsula View Retirement Living

Inspired by the natural beauty of the local area, Peninsula View Retirement Living offer you a relaxed lifestyle in state-of-the-art villas.

Life. Styled your way.

Live in the heart of the Mornington Peninsula,
with everything on your doorstep.

Peninsula View Retirement Living offers you
the ideal location for your retirement –
it's your time to live the way you want.

TRAVEL AND PURSUE YOUR INTERESTS –
ALL WHILE BEING PART OF A CARING,
SUPPORTIVE COMMUNITY.



Stylish living. Relaxed lifestyle.

Peninsula View Retirement Living offers you the ideal location for your retirement.

With the heart of the Mornington Peninsula on your doorstep, you can easily explore world-class beaches, wineries, restaurants, national parks, golf courses and art galleries.

Whether it's fish and chips on the beach, or pinot noir among the vines, you can make the most of the Peninsula lifestyle.

ENJOY THE LIFESTYLE YOU'VE ALWAYS WANTED.



Live the way you want.



***There is no better place to spend
your retirement!***

Peninsula View Retirement Living offers you access to a fantastic lifestyle, with a first-class Community Hub at your doorstep – so you can retire in comfort and security.

**ENJOY TIME WITH FAMILY AND FRIENDS,
WITHOUT THE BURDEN OF A LARGE
FAMILY HOME.**



Discover the Peninsula.

With Mornington's cosmopolitan Main Street and Mount Eliza just a short drive away, you can wine, dine and shop at your leisure.

With the heart of the Mornington Peninsula on your doorstep, you can easily explore world-class beaches, wineries, restaurants, national parks, golf courses and art galleries.

Main Street Mornington features bustling cafés, excellent restaurants and a weekly market. And it runs all the way to the coast – it's the ideal spot for a glass of wine while overlooking the pristine waters of the bay.

INDULGE IN THE
MANY DELIGHTS
OF MAIN STREET.



At a glance...

12 mins

PENINSULA VIEW TO MOUNT ELIZA

Discover seaside villages including Mount Eliza, Mount Martha and Mornington. Explore beautiful beaches and galleries, browse crafts at the market, or dine while overlooking the water.

18,800

POPULATION OF FRANKSTON SOUTH

Frankston South is a small community with easy access to shopping and health services, allowing for a relaxed lifestyle at the gateway to the Mornington Peninsula.

50 mins

PENINSULA VIEW TO MELBOURNE

In the mood for a show or a night out? Central Melbourne is only 50 minutes away. Enjoy a change of pace, knowing that you'll be coming home to the peace of the Peninsula.

22 mins

PENINSULA VIEW TO RED HILL

A trip to Red Hill is a just a leisurely drive away, where you can explore many of the region's best restaurants and wineries.

60 wineries

ON THE MORNINGTON PENINSULA AND SURROUNDING AREAS

The Mornington Peninsula is home to 60 wineries and at least 50 cellar doors. Its cool climate makes wine growing ideal, especially for varietals such as pinot noir, chardonnay, wpinot gris and tempranillo.

15 awards

CHEF'S HAT RESTAURANTS

A haven for foodies, the Mornington Peninsula has featured prominently at the recent Australian Good Food Guide Chef's Hat awards, with a total of 15 restaurants receiving awards in 2024.



Time. To discover.

Peninsula View Retirement Living offers you the freedom to lock up and leave whenever you like, all while knowing that you're part of a supportive community.

ENJOY THE GOOD THINGS IN LIFE – WHILE HAVING
PRIVACY AND INDEPENDENCE WHEN YOU WANT IT.





Undeniable style.

Peninsula View Retirement Living is a brand-new retirement community designed by renowned architects Clarke Hopkins Clarke.

Situated at the top of a rise to maximise views of the surrounding area and Westernport Bay, Peninsula View has been designed with a focus on style, quality and accessibility.

Importantly, there are no stairs. The Community Hub is centrally located on the ground floor of the apartment building and easily accessed.

PENINSULA VIEW IS DESIGNED TO MAXIMISE VIEWS AND NATURAL LIGHT.



Spectacular facilities.

State-of-the-art community amenities

The Community Hub at Peninsula View Retirement Living offers a range of community amenities, including a café, bar, lounges, cinema and a pool, gym and consulting room for all your wellness needs.



You could start your day in the health and wellness area with a swim in the pool or some strength training in the gym. Or perhaps you prefer a more leisurely start with a newspaper and coffee in the café.

A COMMUNITY HUB WITH EVERYTHING YOU NEED.





Life. Styled your way.

Enjoy time with your friends and family in a beautiful villa, without the burden of a large family home.

THOUGHTFUL DESIGN FOR EASY LIVING.





By the sea.

This scheme features lighter timber and stone finishes that speak to long summer days at the beach with good friends and family.



By the hills.

This scheme features darker timber and stone finishes that evoke the rich earth that supports world-class vineyards and gourmet local produce.

COLOUR PALETTE

Showcasing a contemporary coastal design aesthetic, the styling concept for Peninsula View Retirement Living highlights the natural surroundings of land and sea that are unique to the Mornington Peninsula.

Muted tones and timber accents represent the natural colours found in Australian natives, complemented by minimal black details for a contemporary balance.



ENTERTAINER'S DELIGHT.

The Peninsula View villas maximise light and views, with living areas opening seamlessly onto courtyards.

LIVING ROOM – 'BY THE SEA' FINISH
Artist impression only.



FLAWLESS FINISHES.

The villa kitchens offer quality finishes and contemporary style, including 'New Gen' no silica stone benchtops and splashbacks.

Taking cues from the surrounding area, the light, fresh colour palette features natural stone look tiles, no silica bench tops, and timber flooring and cabinetry, with subtle feature colours in the kitchen joinery.

KITCHEN – 'BY THE SEA' FINISH
Artist impression only.



LUXURIOUS LIVING.

The light, fresh colour palette is echoed in the bathrooms, with lighter timber accents in cabinetry and a light 'new gen' no silica stone vanity top. Natural stone look feature wall and slip-resistant floor tiles complement fresh white wall tiling.

The villas' thoughtful design is carried through the bathrooms, allowing ease of access. They have been designed with room to move and for future accessibility for residents, right down to the selection of shower heads and toilet suites.

BATHROOM – 'BY THE SEA' FINISH
Artist impression only.



ENTERTAINER'S DELIGHT.

The Peninsula View villas maximise light and views, with living areas opening seamlessly onto courtyards.

LIVING ROOM – 'BY THE HILLS' FINISH
Artist impression only.



SOPHISTICATED STYLE.

The villa kitchens offer quality finishes and contemporary style, and include ‘new gen’ no silica stone benchtops and splashbacks.

Taking cues from the surrounding area, the darker, sophisticated colour palette features richer hued ‘new gen’ no silica benchtops, and timber flooring and cabinetry, with subtle feature colours in the kitchen joinery.

KITCHEN – ‘BY THE HILLS’ FINISH
Artist impression only.



LUXURIOUS LIVING.

The richer, sophisticated colour palette is echoed in the bathrooms, with darker timber accents in cabinetry and ‘new gen’ no silica stone vanity top. Natural stone look feature wall and slip-resistant floor tiles complement fresh white wall tiling.

The villas’ thoughtful design is carried through the bathrooms, allowing ease of access. They have been designed with room to move and for future accessibility for residents, right down to the selection of shower heads and toilet suites.

BATHROOM – ‘BY THE HILLS’ FINISH
Artist impression only.



ELEGANT COMFORT.

The light, fresh colour palette is echoed in the bedrooms, with lighter neutral accents and tones in carpet and wall colour selection.

The villas' thoughtful design is carried through into the bedrooms, allowing lots of natural light. They have been designed with room to move and for future accessibility for residents, including cupboard space size or walk in robes.

BEDROOM – 'BY THE SEA' – 'BY THE HILLS' FINISH
Artist impression only.

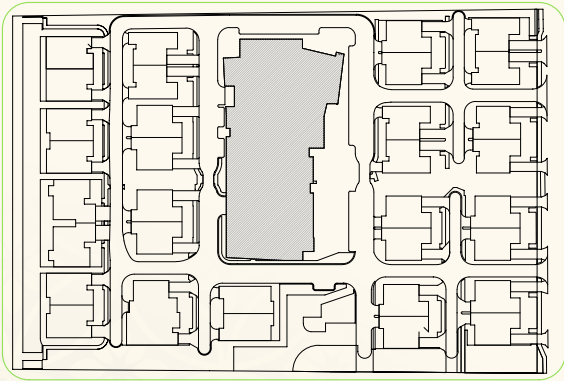
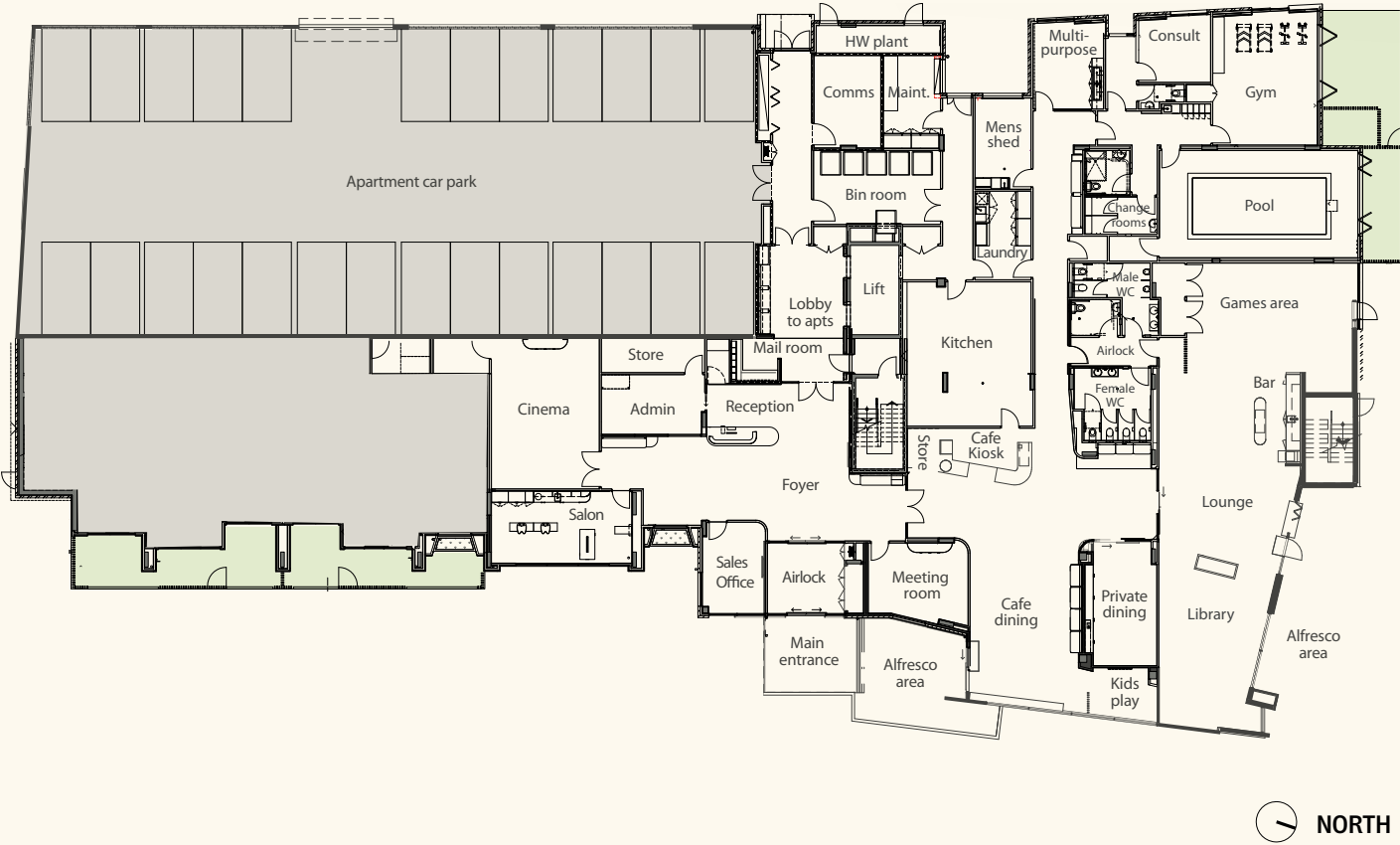
Time. To make a move.

Peninsula View Retirement Living offers you a choice of two or three bedroom villas - all with a courtyard.

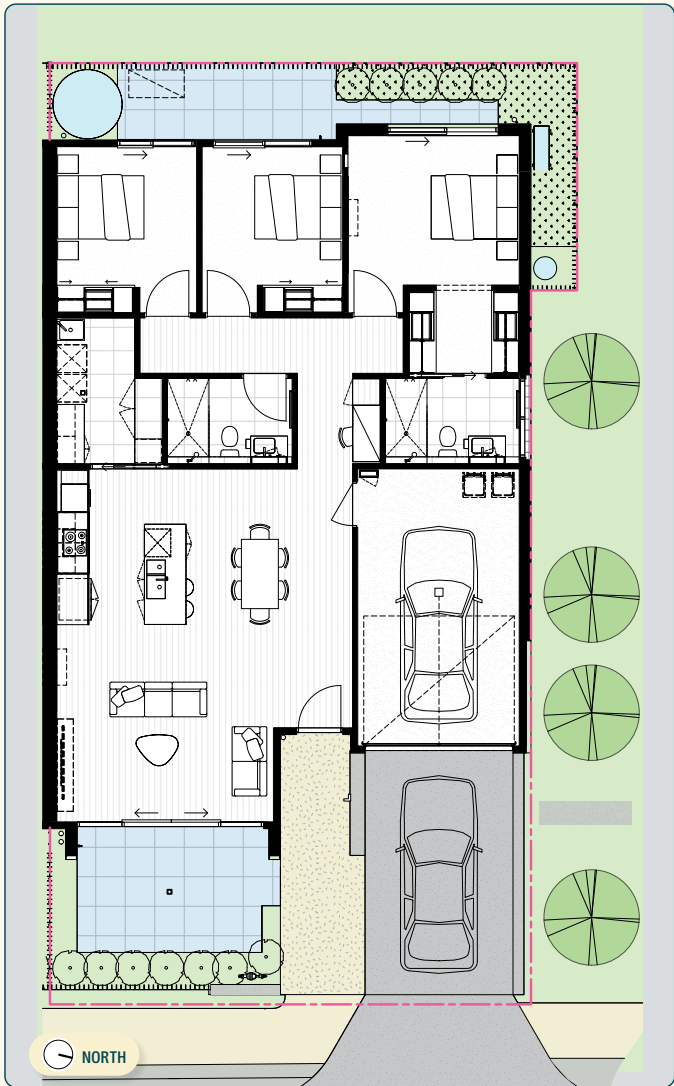
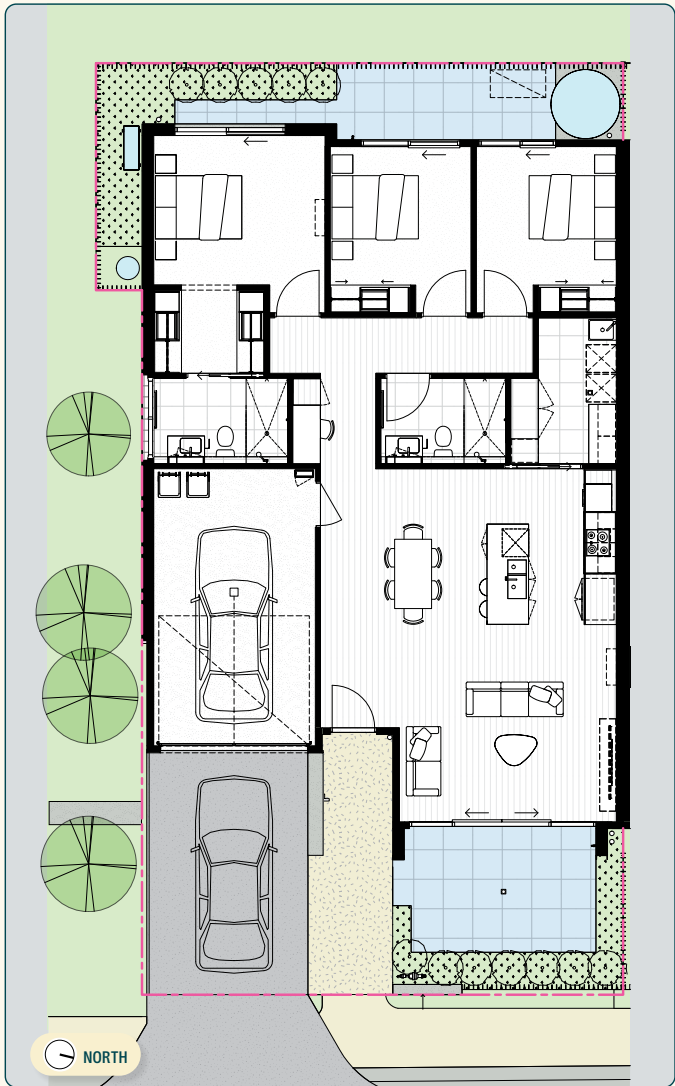
Boasting premium quality fittings and finishes, with a focus on sustainability, these villas offer generous light, size and storage.

**ACT QUICKLY TO SECURE YOUR
FIRST CHOICE OF VILLA.**

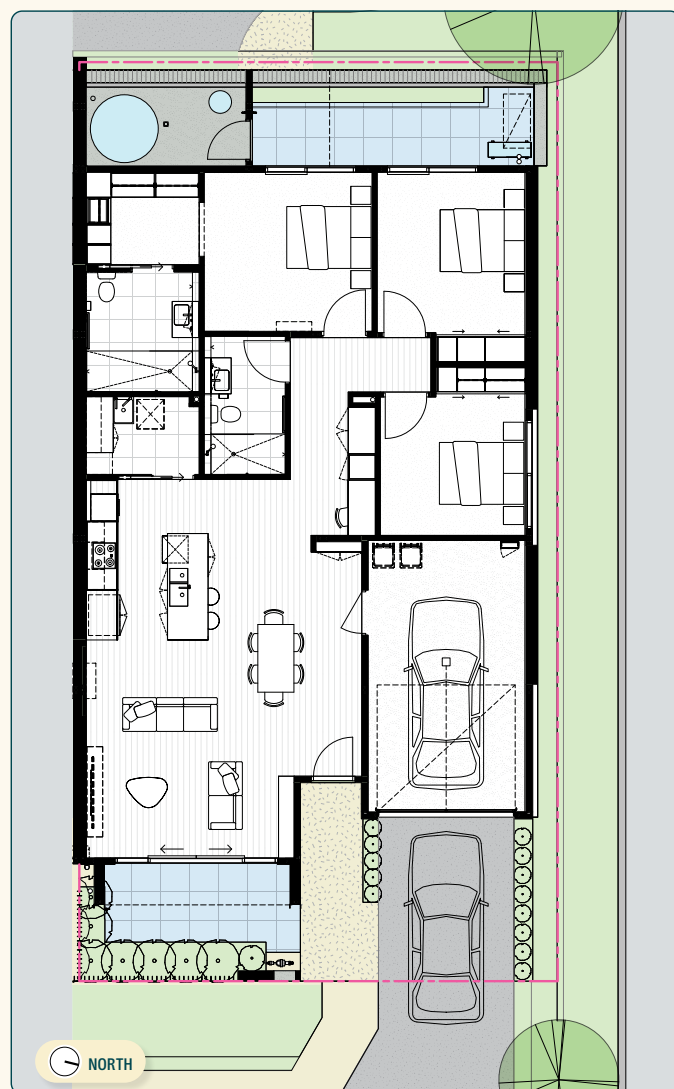
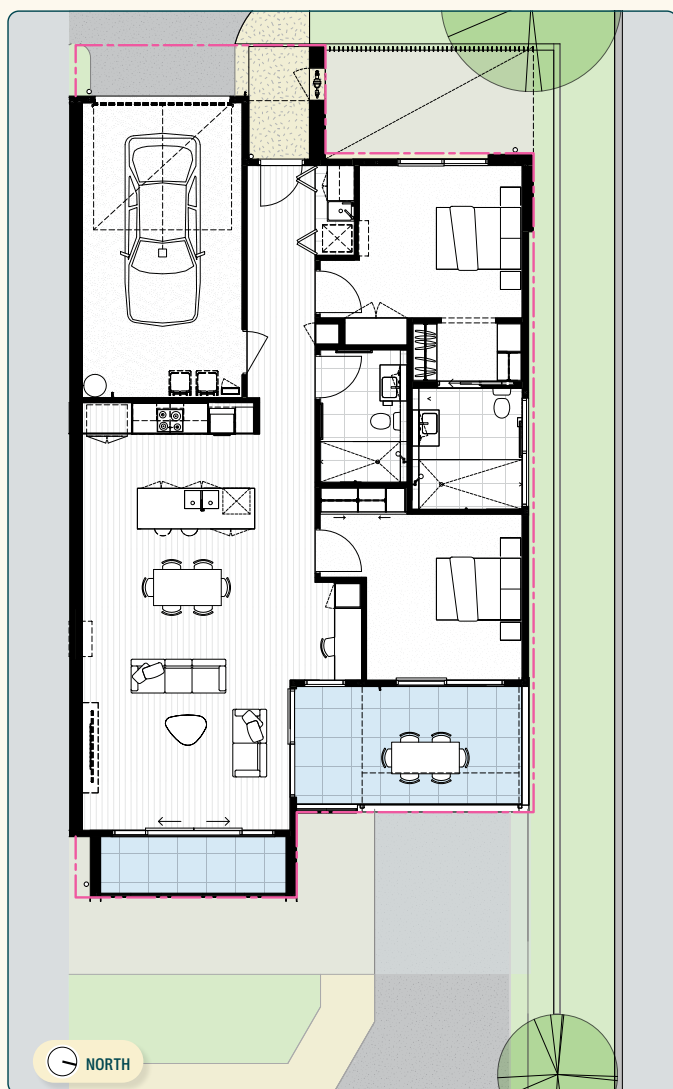




KEY PLAN



single level 2 & 3 bedroom villas



over and under 2 & 3 bedroom villas

Peninsula View

Retirement Living

Life. Styled your way.

BAPTCARE HAS BEEN BUILDING COMMUNITIES FOR 80 YEARS.

Peninsula View is a community built by Baptcare, a not-for-profit organisation with 80 years of experience across retirement living, aged care and community services.

OUR OTHER RETIREMENT LIVING COMMUNITIES

Hedley Sutton | Camberwell
Karana | Kew
Karingal | Devonport
Strathalan | Macleod
The Orchards | Doncaster East

Sales/Enquiries – 0439 410 207

Email – bbullock@baptcare.org.au

Baptcare

30-32 Moorooduc Highway, Frankston South